

DENTESSA 
...Elevating Dentistry



DENTESSA 
...Elevating Dentistry



Crafting Excellence

At **DENTESSA**, we believe that excellence in dentistry begins with the materials you choose and the trust you place in them. Our headquarters is located in Mumbai, Maharashtra, India, and we operate a world-class manufacturing facility in the heart of Jammu, Jammu and Kashmir, India.

DENTESSA is dedicated to empowering dental professionals who are driven by a passion to deliver the very best care to their patients by using the best dental products, manufactured in a STATE-OF-THE-ART manufacturing plant in India.

At **DENTESSA**, we carefully source the finest raw materials to craft formulations that are effortless to use and clinically reliable. At the end, we leave no detail overlooked.

Every material we create reflects our commitment to purity, precision, and purpose. The chemistry behind each product is fine-tuned to work seamlessly in your hands, allowing you to focus on your work because what matters most: your patient's comfort and care.

Built upon years of "Research, Real-World Clinical Use, and Continuous Refinement", **Atyanta** is now **DENTESSA**, standing beside our dentists and giving them the confidence to show their skills without any hesitation.

Because when you hold **DENTESSA PRODUCTS** in your hands, you have the promise of **DENTESSA** and help us to elevate dentistry in India. Like,

A Promise Of Trust.

A Promise Of Performance.

A Promise Of Excellence.

DENTESSA

...Elevating Dentistry



From the Founders' Desk,

At DENTESSA, our founders have been in your shoes, racing against time, balancing perfection with practicality, and hoping that every material we use lives up to its promise.

Accordingly, we developed DENTESSA serving both as a brand and as a solution to the genuine needs of clinicians, featuring reliable materials and effortless workflow.

Chemistry that doesn't fail under pressure.

Every product in this company is something that we desire on our workstations. Carefully developed, tested on multiple patients, and approved by many clinicians. DENTESSA's goal is to support dental professionals with quality dental products only.

Dentessa would like to be a part of your clinical practice- not just a name on your shelf.

OVERVIEW



Endodontics

- BIO-VION: Bioceramic Root Canal Sealer.....02
- REGIVION: Bioceramic Putty.....06
- NEXA PREP: EDTA Gel.....08
- NEXACAL: Aqueous Calcium Hydroxide.....10
- i-NEXACAL: Calcium Hydroxide Plus Iodoform.....12
- SOLVEXA: Gutta Percha Solvent.....14



Restorative Dentistry

• NEXA-ETCH: Etchant Gel.....	18
• NEXA-ETCH XL: Jumbo Etchant Gel.....	20
• RESINX-GIC: Light Cure Glass Ionomer Cement.....	22
• NEXAFLO: Flowable Composite.....	24
• LINICAL: Light Cure Calcium Hydroxide.....	26
• INTER-FILL: Temporary Filling Material.....	28
• BARRIXA: Gingival Barrier.....	30

OVERVIEW



Diagnosis & Prophylaxis

• FOG-NIX: Anti-Fog Spray.....	34
• GLEAM: Prophylaxis Paste.....	36
• GLOSSIX: Composite Polishing Paste.....	38
• GLANZAA: Diamond Polishing Paste.....	40
• MARKX: Caries Indicator Dye.....	42
• SENSYRA: Desensitiser Liquid.....	44
• ZENTRA: Pit & Fissure Sealant.....	46



Surgery

- STATRIX: Hemostatic Gel.....50
- STATRIX AQUA: Hemostatic Liquid.....52
- RETRIX: Gingival Retraction Paste.....54

Endodontics

Healing Beyond the Surface.



Perfect Seal



Efficient Canal Cleaning



Bioactive



Biocompatible





BIO-VION

Next-gen injectable sealer with superb flow, sealing, and biocompatibility.



Long Lasting Seal



No Post Operative Pain



Unparalleled Flow



INDICATIONS

- △ Permanent obturation of root canals.
- △ Compatible with both cold and warm obturation techniques.
- △ Suitable for use with single cone, lateral compaction, or thermoplasticized gutta percha techniques.

KEY BENEFITS

- △ Bioactivity
- △ Superior Seal
- △ Radiopaque
- △ Premixed Syringe
- △ Moisture-activated Set
- △ High pH (>12)
- △ Non-shrinking, Non-resorbable

PARAMETER	BIO-VION	INTERNATIONAL BRANDS
Superior flow and canal adaptation	✓✓✓	✓✓
Sets in the tip, therefore more wastage	No	Yes
Clinically validated in India	✓✓✓	X
Affordable price point	✓✓✓	X (More than Double)

Clinical Success with BIO-VION

A showcase of real-world endodontic results shared by leading clinicians across India.



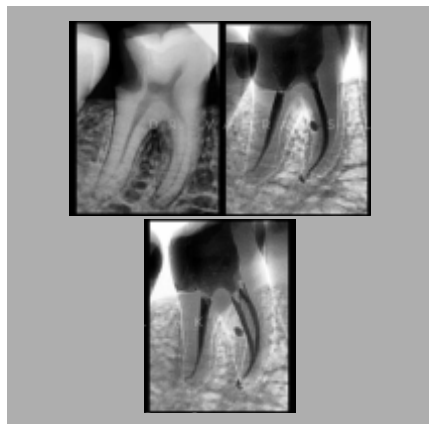
By Dr. Dharmesh Singh, Ranchi
Shows excellent Sealer flow into the lateral canals as well.



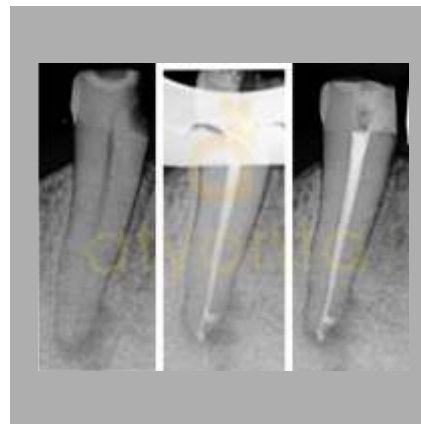
By Dr. Brijesh Vyas, Surat
Exceptional healing owing to the Bioactive properties of the sealer.



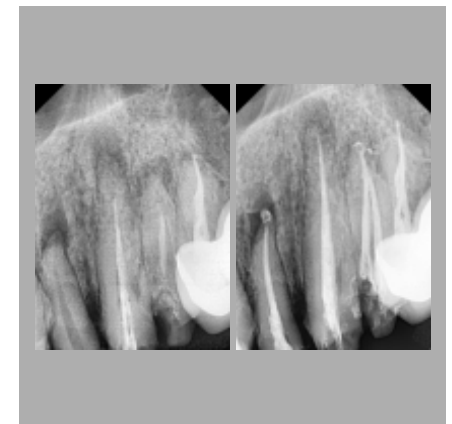
By Dr. Anand Mohatta, Mumbai
Perfect sealing of an open root apex.



By Dr. Kanraj Solanki, Gujarat
Ease of use at his very first time with a Bioceramic sealer.



By Dr. Pradnya Chaudhari, Mumbai
Pairs up perfectly with the single cone obturation technique to save chair time.



Dr. Payal Batavia, Vadodara
Excellent flow, sealing all the exit portals with minimum patient discomfort.



Why switch to a Bioceramic Sealer?

PARAMETER	BIO-VION	EPOXY RESIN SEALER	ZOE SEALER
Biocompatibility	✓✓✓	✓✓	✓
Setting in Moisture	✓✓✓	X	X
Flow & Adaptation	✓✓✓	✓✓	✓
Radiopacity	✓✓	✓✓	✓
Bioactivity	✓✓✓	X	X
Post-op Pain	Minimal, if at all	Potentially more	Moderate
Shrinkage on Setting	None, infact expands on setting	✓	✓
Hard Tissue Formation	✓✓✓	X	X
Antibacterial pH	✓✓✓	X	✓
Resorption Resistance	✓✓✓	✓✓	X
Ease of Use	✓✓✓	X	X

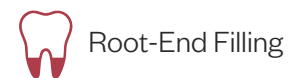
Why choose Bio-Vion

PARAMETER	BIO-VION	INTERNATIONAL BRANDS
Superior flow and canal adaptation	✓✓✓	✓✓
Sets in the tip, therefore more wastage	No	Yes
Clinically validated in India	✓✓✓	X
Affordable price point	✓✓✓	X (More than Double)



REGIVION

One-stop solution for root-end fillings, perforations, capping, and apexification.



INDICATIONS

- △ Root-end filling after apicoectomy.
- △ Repair of root or furcation perforations.
- △ Pulp capping (direct or indirect).
- △ Apexification in immature teeth.
- △ Resorption repair.

KEY ADVANTAGES

- △ Premixed & Ready to Use
- △ Superior Biocompatibility
- △ Moisture Activated
- △ Radiopaque
- △ Excellent Seal

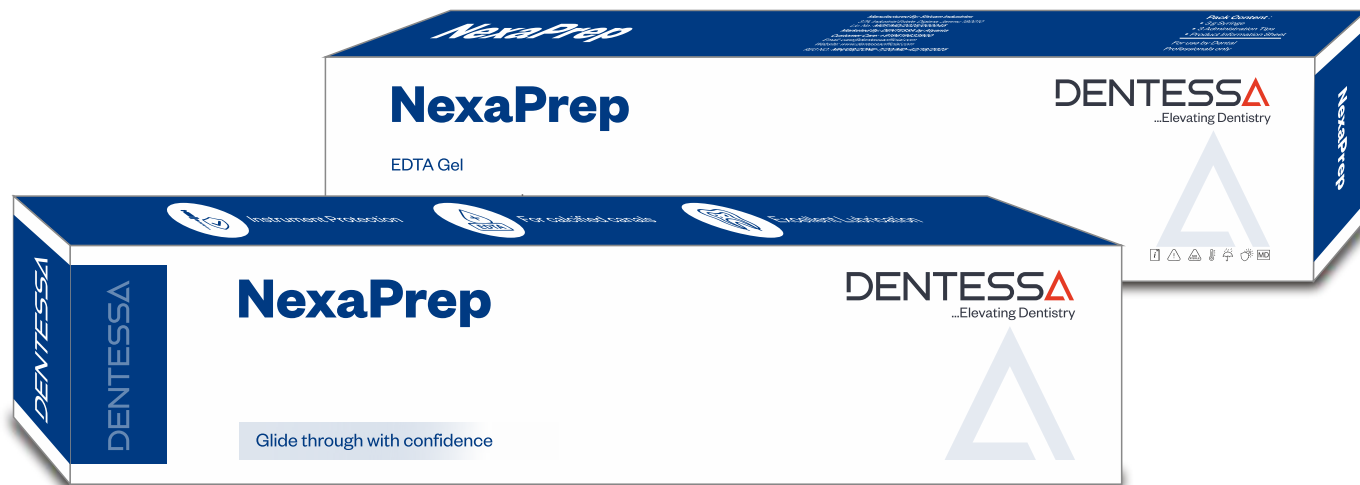
DID YOU KNOW?

A next-generation alternative to MTA, Bioceramic Putty comes in a ready-to-use, pre-mixed syringe, eliminating the need for proportional mixing. This simplifies handling and ensures precise, mess-free application—especially in challenging areas like perforations, root-end fillings, or apexifications.



NEXAPREP

Effectively removes smear layer for cleaner canals and better instrumentation.



Instrument Protection



For calcified canals



Excellent Lubrication



3 g x 1

INDICATIONS

- △ Lubrication and chelation during root canal instrumentation.
- △ Smear layer removal.
- △ Opening calcified canals.
- △ Enhancing irrigation effectiveness.

KEY ADVANTAGES

- △ Controlled Viscosity
- △ Improves Instrument Glide
- △ Enhanced Canal Cleanliness
- △ Excellent Chelation
- △ Compatible with All Irrigants

DID YOU KNOW?

Despite its name, the primary role of EDTA Gel isn't chelation—but lubrication.

It helps instruments glide smoothly inside the canal, reducing friction and minimizing the risk of instrument fracture, making endodontic procedures safer and more efficient.



NEXACAL

Delivers antimicrobial action and healing with smooth flow deep into the canals.



Superior flow



Easy Administration



Homogeneous Consistency



3 g x 1

INDICATIONS

- △ Temporary intracanal dressing between endodontic appointments. Management of weeping canals.
- △ Resorption cases.
- △ Treatment of lesions with endodontic origin.
- △ Apexification procedures.

KEY ADVANTAGES

- △ High pH (~12.5)
- △ Water-based formulation
- △ Easy syringe delivery
- △ Biocompatible
- △ Long delivery tip

PARAMETER	NEXACAL	POWDER-LIQUID SYSTEM
Ease of Use	✓✓✓	x
Application Time	Instant	Slower
Consistency	Homogeneous	Inconsistent
Waste	Minimal product loss	Prone to wastage



i-NEXACAL

Combines healing and broad-spectrum disinfection for paediatric obturations.



Resorption Compatible Material



Extended Antimicrobial Action



First Choice for Chronic Lesions

INDICATIONS

- △ Suitable for deciduous teeth root canal obturation.
- △ Temporary root canal filling.
- △ Apexification in non-vital teeth.
- △ Intracanal dressing for infected root canals.

KEY ADVANTAGES

- △ Easy to place
- △ Dual Antibacterial Power
- △ Smooth consistency
- △ Biocompatible formulation
- △ Long-lasting disinfection
- △ Resorbs with the paediatric tooth

PARAMETER	i-NEXACAL	CONVENTIONAL Ca(OH) ₂
Antibacterial Effect	✓✓✓	✓✓
Radiopacity	✓✓✓	✓
Periapical Healing Support	✓✓	✓
Resorption Compatibility	✓✓✓	✓
Post-op Comfort	✓✓	✓
Application in Paediatric Endodontics	✓✓✓	No
Duration of Effect	Upto 3 weeks	Upto 1 week



SOLVEXA

Quickly softens gutta percha and sealers for efficient retreatment.



Softens Gutta-Percha & Sealers



Fast Action



Non-Toxic

INDICATIONS

- △ Opening gutta percha in root canal retreatment procedures.
- △ Removal of resin-based and Zinc Oxide Eugenol based sealers.
- △ Re-establishing canal patency for re-instrumentation in retreatment procedures.

KEY ADVANTAGES

- △ Rapid Softening
- △ Safe & Effective
- △ Controlled Evaporation
- △ Low Surface Tension
- △ Compatible with Rotary & Hand Techniques
- △ Safe & Non-Toxic to Peri-apical tissues

PARAMETER	SOLVEXA	OTHER GP SOLVENT
Safety Profile	✓✓✓	X
Tissue Compatibility	✓✓✓	X
Odor	Pleasant	Irritating and Dangerous
Evaporation Control	✓✓	Poor
Shelf Stability	✓✓	Evaporates easily

Restorative Dentistry

Where Strength, Beauty, and Precision Come Together.



Effortless Application



Bond You Can Trust



Natural-Looking Restorations



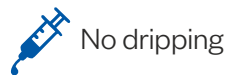
Built to Last





NEXA-ETCH

A high-viscosity 37% phosphoric acid gel designed for precise, controlled enamel and dentin etching.



No dripping



Silica Free



Easy rinse off

INDICATIONS

- △ Etching of enamel and dentin prior to adhesive bonding.
- △ Suitable for total-etch and selective-etch techniques.
- △ Use before placement of composites, sealants, veneers, and orthodontic brackets.

KEY ADVANTAGES

- △ Silica free
- △ Optimal Concentration
- △ Controlled Viscosity
- △ High Visibility
- △ Clean Rinse-Off
- △ Syringe Delivery
- △ Compatible with All Adhesive Systems

PARAMETER	NEXA-ETCH	OTHER LIQUID ETCHANT
Precision of Application	✓✓✓	✓
Ease of Rinsing	✓✓✓	✓
Visual Contrast	✓✓	✓
Bonding Success Rate	✓✓	✓



NEXA-ETCH XL

Ideal for high-volume practices, workshops, and educational setups.



Cost Effective



Easy Refilling



High Flow Practices



25 g x 1

INDICATIONS

- △ Etching of enamel and dentin prior to adhesive procedures.
- △ Suitable for total-etch and selective-etch techniques.
- △ Ideal for multiple-case use in busy clinical or teaching environments.

KEY ADVANTAGES

- △ Bulk Volume
- △ Optimal Etching Strength
- △ High Visibility
- △ Smooth Flow
- △ Economical
- △ Versatile
- △ Comes with an adapter

DID YOU KNOW?

- △ 8x volume: Perfect for high patient flow clinics
- △ Reduced unit cost per gram: Greater value for busy practitioners
- △ Fewer refills: Never run out of etchant
- △ Same trusted formulation as standard etchant: No compromise on performance
- △ Fulfills your orthodontic need.



RESINX-GIC

Light-cured, Easy to use fluoride-releasing cement for long-lasting, aesthetic restorations.



No etching or bonding



Durable restorations



Pediatric Friendly



INDICATIONS

- △ Sandwich technique under composite restorations.
- △ Restoration of cervical lesions and root caries.
- △ Paediatric and geriatric restorations.
- △ Pre-Endo buildups.

KEY ADVANTAGES

- △ Easy to use
- △ Fluoride Release
- △ Light-Cured
- △ Excellent Adhesion
- △ Low Solubility
- △ High Flexural Strength
- △ Paediatric-Friendly

PARAMETER	RESINX-GIC	POWDER-LIQUID GIC
Application Simplicity	✓✓✓	✓
Setting Control	✓✓✓	✗
Bond Strength	✓✓	✓
Moisture Sensitivity	No	Yes
Time Efficiency	✓✓	✓
Paediatric Friendliness	✓✓✓	✓
Mixing Accuracy	✓✓✓	✗
Post-op Retention	✓✓	✓
Fluoride Release	✓✓	✓



NEXAFLO

A light-cured flowable composite - ideal for conservative restorations and cavity lining.



Easy Handling



High Strength



Superior Adaptation

INDICATIONS

- △ Class V, and small Class I restorations.
- △ Cavity liner/base under posterior composites.
- △ Repair of composite and ceramic restorations.
- △ Minimally invasive aesthetic enhancements.

KEY ADVANTAGES

- △ Excellent Flowability
- △ Natural Aesthetics
- △ Strong Bonding
- △ Easy Handling
- △ Versatile
- △ A2 Shade



LINICAL

Light-cured liner for quick, effective Pulp Capping and Pulp Protection.



Pulp Protection



Promotes repair



Controlled set

INDICATIONS

- △ Lining under composites, amalgams, and GIC.
- △ Indirect pulp capping.
- △ Protection of the dentin-pulp complex.
- △ Deep cavity preparations.
- △ Base under restorative materials where light curing is preferred.

KEY ADVANTAGES

- △ Light-Curable Formula
- △ Alkaline pH (~11-12)
- △ Moisture Tolerant
- △ Excellent Handling

PARAMETER	LINICAL	SELF-CURE Ca(OH) ₂ LINERS
On-Demand Setting	✓✓✓	✓
Handling & Placement	✓✓✓	✓
Compressive Strength	✓✓	✓
Adhesion to Composites	✓✓	✗
Moisture Tolerance	✓✓	✗
Ease of Use	✓✓✓	✓
Time Efficiency	✓✓✓	✗



INTER-FILL

Soft-setting material for secure temporary cavity filling.



Easy Removal



Optimal Seal



Radio-opaque

INDICATIONS

- △ Temporary sealing of cavities during or after root canal therapy.
- △ Temporary filling for teeth awaiting permanent restorations.

KEY BENEFITS

- △ Easy to Use
- △ Firm Seal
- △ Comfortable for Patients
- △ Quick Set Time

PARAMETERS	INTER-FILL	ZOE CEMENT
Ease of Placement	✓✓✓	✓
Marginal Seal	✓✓✓	✓
Patient Comfort	✓✓✓	✓
Retention Strength	✓✓	✓
Clean Removal	✓✓✓	✓
Taste and Odor	✓✓✓	✗
Compatibility with Final Restoration	✓✓	✗



BARRIXA

Light-cured resin barrier for soft tissue protection during dental procedures.



Moisture control



Light cured



Non dripping



INDICATIONS

- △ Protection of gingiva during whitening and etching procedures.
- △ Isolation during composite layering or bonding.
- △ Shielding of soft tissues from chemical agents.
- △ Moisture control in aesthetic treatments.

KEY BENEFITS

- △ Excellent Tissue Isolation
- △ Light-Cured
- △ Flexible & Strong
- △ Easy Application
- △ Versatile Use
- △ Patient-Safe
- △ Contrasting color

PARAMETER	BARRIXA	LIQUID DAM
Moisture Control	✓✓✓	✓
Tissue Protection	✓✓✓	✓
Application Simplicity	✓✓✓	X
Chairside Time Efficiency	✓✓	X
Post-procedure Removal	Easy and Clean	Difficult
Seal Integrity	Excellent	Poor

Diagnosis & Prophylaxis

Early Detection. Life-long Protection.



Early Caries Detection



Plaque & Stain Removal



Visual Clarity



Sensitivity Management





FOG-NIX

Multi-surface spray to prevent fogging on mirrors, face shields, and lenses.



Fast Acting



Streak-free



Clear Vision



100 ml

INDICATIONS

- △ Prevents fog formation on mouth mirrors during procedures.
- △ Keeps face shields, protective eyewear, and loupes clear.
- △ Suitable for use on intraoral camera lenses.
- △ Ideal in high-humidity, mask-intensive environments.

KEY BENEFITS

- △ Crystal Clear Visibility
- △ Long-Lasting Effect
- △ Multi-Surface Safe
- △ Quick-Dry Formula
- △ Easy to Use
- △ Enhances Efficiency

PARAMETER	FOG-NIX	ALCOHOL WIPES
Anti-Fog Duration	Long	Short
Clarity Maintenance	✓✓✓	✓
Ease of Use	✓✓✓	✓
Streak-Free Finish	✓✓	X
Odor	None	Can be irritating
Cost Efficiency	✓✓✓	✓



GLEAM

For effective plaque, stain, and debris removal.



Effective Stain Removal



Smooth Polish



Long Lasting Protection

INDICATIONS

- △ Mechanical removal of plaque and surface stains.
- △ Final polishing after scaling and root planning.
- △ Pre-treatment cleaning before sealants or restorations.
- △ Ideal for routine oral prophylaxis appointments.

KEY ADVANTAGES

- △ Effective Cleaning
- △ Smooth Finish
- △ Non-Splattering Consistency
- △ Pleasant Flavour
- △ Non-Abrasive
- △ Suitable for All Ages

PARAMETER	GLEAM	STANDARD POLISHING PASTE
Stain Removal and Plaque control	✓✓✓	✓
Tooth Surface Shine	✓✓	✓
Fluoride Enrichment	✓✓	✓
Patient Comfort and flavour acceptance	✓✓	✓
Freshness After Use	✓✓✓	✓
Compatibility with Cups/Brushes	✓✓✓	✓



GLOSSIX

High-performance polishing paste designed to deliver a natural-looking, high-gloss finish



High Gloss Finish



Gentle Abrasion



Long Lasting Shine

INDICATIONS

- △ Final polishing of anterior and posterior composite restorations.
- △ Compatible with all composite systems.
- △ Ideal for use after finishing discs, strips, and polishing burs.

KEY ADVANTAGES

- △ Mirror-like Shine
- △ Universal Compatibility
- △ Non-abrasive Formula
- △ Easy Handling
- △ Patient Comfort
- △ Cost-effective

PARAMETER	GLOSSIX	NO OR BASIC POLISHING
Surface Smoothness	✓✓✓	X
Plaque Resistance	↑↑↑	X
Esthetic Finish	↑↑↑	X
Patient Comfort	✓✓	✓
Polish Longevity	✓✓	X
Gingival Tissue Response	✓✓	X
Final Restoration Quality	✓✓✓	X



GLANZAA

A premium polishing paste for ultra-high luster.



Enhanced Luster



Exceptional Polish



Universal Application



3 g x 1

INDICATIONS

- △ Polishing of ceramic, metal and zirconia restorations.
- △ Finishing of enamel surfaces in aesthetic zones.
- △ Final high-gloss polishing of composite restorations.

KEY ADVANTAGES

- △ Multi-Surface Use
- △ Diamond-Enhanced Shine
- △ Micronized Particle Size
- △ Smooth Consistency
- △ Time-Efficient

PARAMETER	GLANZAA	DIAMOND POLISHING PASTE
Compatible with Zirconia, Ceramic, Metal etc.	✓✓✓	X
Level of Gloss	✓✓✓	✓
Mirror-Like Finish	✓✓✓	✓
Abrasive Efficiency	✓✓✓	✓
Long-Lasting Shine	✓✓	✓
Finish Time	↓	↑
Plaque Resistance	↑↑	↑
Multi-Step Requirement	No	Yes



MARKX

Diagnostic dye for visual identification of infected dentin during caries removal.



Targets Caries



Visible Contrast



Easy to Rinse

INDICATIONS

- △ Detection of carious dentin during cavity preparation.
- △ Evaluation of complete caries removal in conservative restorations.
- △ Helpful in paediatric and geriatric restorative procedures.
- △ Suitable for use in minimal intervention dentistry.

KEY ADVANTAGES

- △ Clear Visualization
- △ Enhances Clinical Accuracy
- △ Quick Application
- △ Water-Soluble
- △ Gentle Formulation
- △ Chair side Confidence
- △ Contrasting color

PARAMETER	MARKX	TACTILE DETECTION
Caries Detection Accuracy	✓✓✓	✓
Minimally Invasive Prep	✓✓✓	✓
Operator Dependence	Minimal	Very high
Visual Confirmation	✓✓✓	X
Clinical Consistency	✓✓	X



SENSYRA

Liquid desensitizer for fast, lasting relief from dentin hypersensitivity.



Fast Relief



Seals Tubules



Boosts Bonding

INDICATIONS

- △ Treatment of cervical dentin hypersensitivity.
- △ Desensitization after crown or bridge preparation before cementation.
- △ Use under restorations to reduce post-op sensitivity.
- △ Sensitivity management during periodontal therapy.

KEY ADVANTAGES

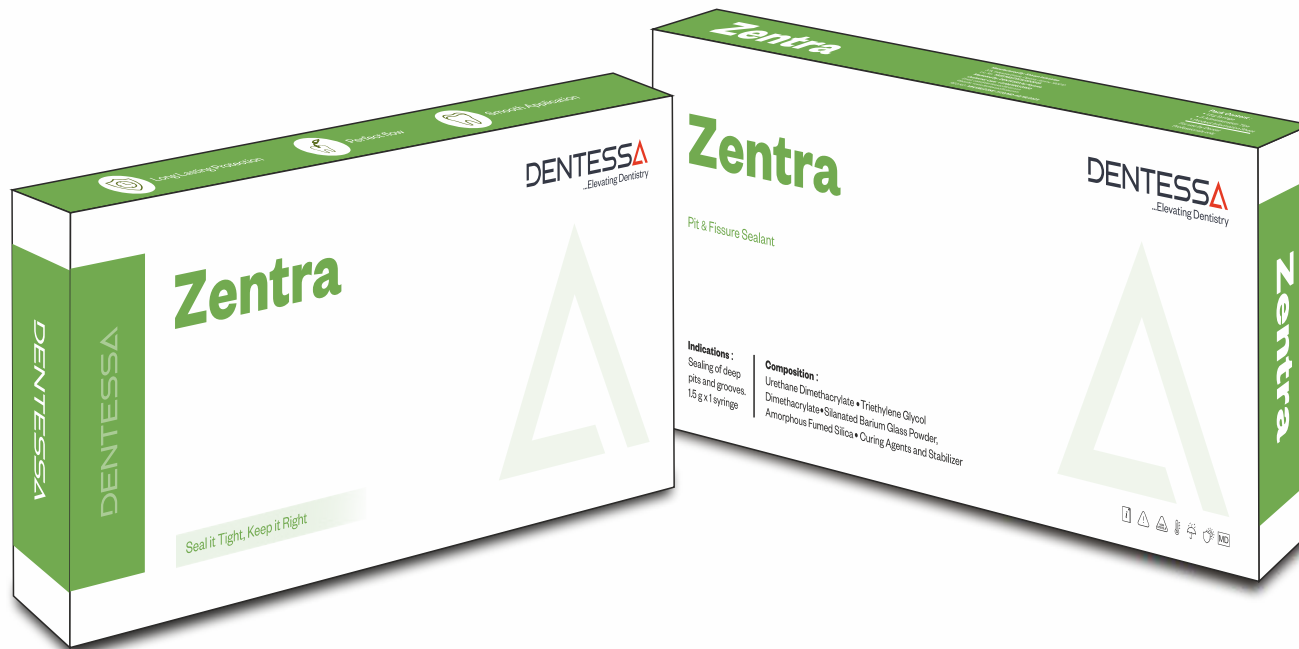
- △ Rapid Action
- △ Long-Lasting
- △ Easy to Apply
- △ Compatible
- △ Non-Irritating
- △ Ideal for Sensitive Cases

PARAMETER	SENSYRA	FLUORIDE VARNISH
Mechanism of Action	Protein precipitation & tubule occlusion	Remineralization & fluoride ion deposition
Onset of Relief	Immediate	Gradual
Duration of Action	Long-lasting	Temporary
Best For	Localized dentin hypersensitivity, post-op sensitivity	General sensitivity, caries prevention



ZENTRA

Light-cured resin-based sealant for preventive protection of occlusal surfaces.



Perfect Flow



Long Lasting Protection



Smooth Application



1.5 g x 1

INDICATIONS

- △ Sealing pits and fissures of permanent molars and premolars.
- △ Caries prevention in high-risk paediatric and adolescent patients.
- △ Protective barrier in patients with deep or irregular occlusal anatomy.
- △ Use in community and school-based preventive programs.

KEY ADVANTAGES

- △ Effective Seal
- △ Light-Cured
- △ High Retention
- △ Low Viscosity
- △ Paediatric Friendly

Surgery

Surgical Solutions for Confident Care.



Soft Tissue Management



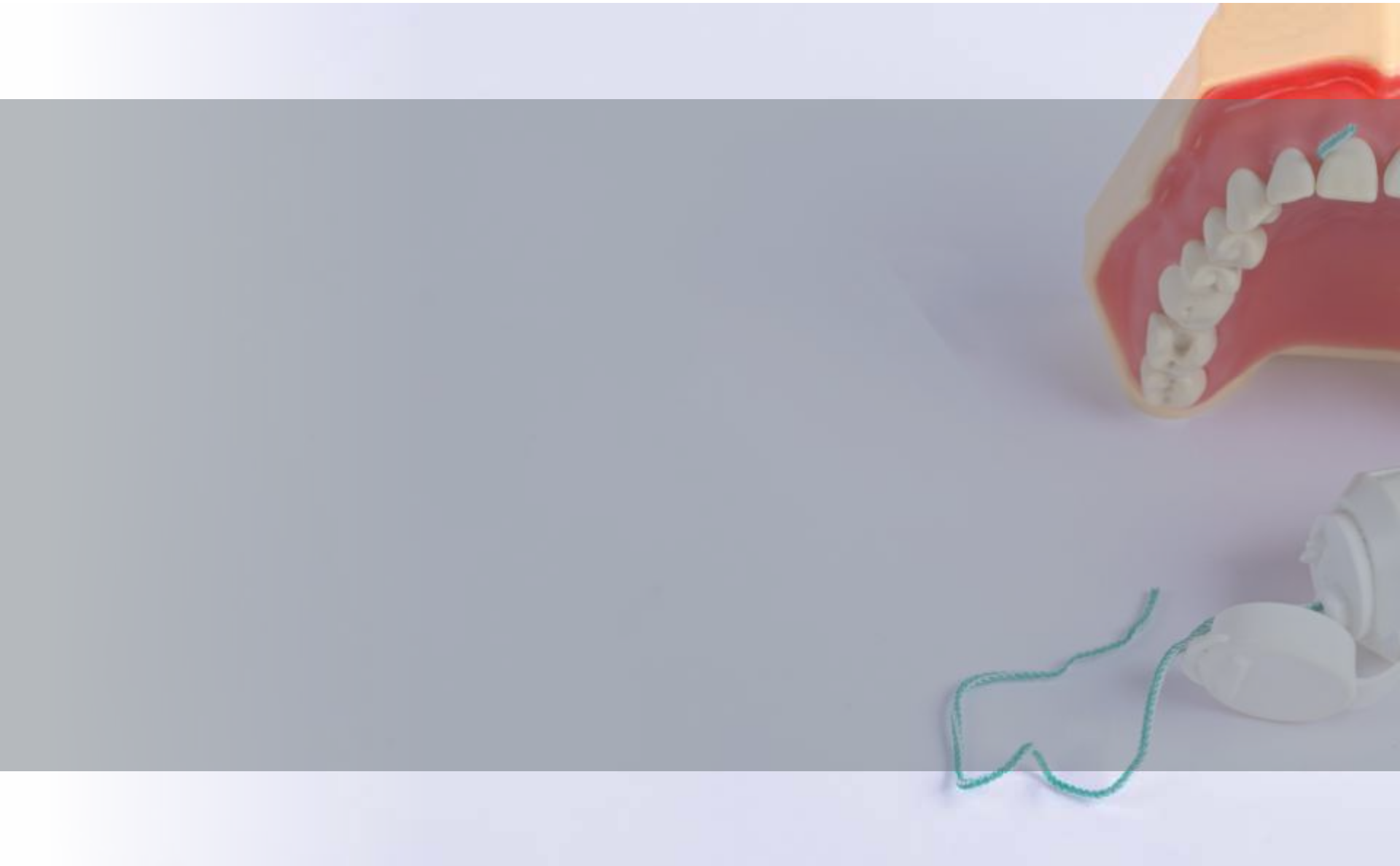
Bleeding Control



Gingival Retraction



Surgical Site Protection





STATRIX

Fast-acting gel for bleeding control during restorative and surgical procedures.



Controlled Delivery



Easy Application



Rapid Bleeding Control



INDICATIONS

- △ Control of minor gingival bleeding during restorative procedures.
- △ Use before impression taking or bonding procedures.
- △ Hemostasis during crown preparation or matrix band placement.
- △ Soft tissue management in surgical and scaling procedures.

KEY ADVANTAGES

- △ Rapid Haemostasis
- △ High Viscosity
- △ Easy to Rinse
- △ Gentle on Tissues
- △ Syringe Delivery
- △ Enhances Procedure Efficiency

PARAMETER	STATRIX	OTHER HEMOSTATIC GEL
Speed of Hemostasis	Rapid	Slower
Tissue Irritation	Minimal	Causes burning sensation
Bleeding Control in Difficult Areas	✓✓	✓
Patient Comfort	✓✓	✓
Time Efficiency	✓✓	✓
Post-op Tissue Health	Excellent	Good



STATRIX AQUA

Fast-acting hemostatic agent for bleeding control in clinical procedures.



Fast Acting Formula



Buffered Solution



Effective Hemostasis

INDICATIONS

- △ Bleeding control post minor surgical procedures or extraction.
- △ Control of minor bleeding during crown preparation and impression taking.
- △ Moisture control around gingival margins before adhesive procedures.
- △ Bleeding control during periodontal or restorative treatments.
- △ Tissue management during retraction and scaling.

KEY ADVANTAGES

- △ Rapid Bleeding Control
- △ Astringent Formula
- △ Versatile Use
- △ Easy Application
- △ Clear Working Field
- △ Safe and Reliable



RETRIX

Astringent paste for gentle gingival retraction and moisture control.



Excellent Retraction



Effective Hemostasis



Precise Application



INDICATIONS

- △ Temporary gingival retraction before impression or scan.
- △ Retraction prior to crown, bridge, or veneer cementation.
- △ Use in restorative procedures near the gingival margin.
- △ Moisture and bleeding control during adhesive protocols.

KEY ADVANTAGES

- △ Effective Tissue Displacement
- △ Astringent Action
- △ Cordless Application
- △ Easy Placement
- △ Clean Removal
- △ Improves Accuracy

PARAMETER	RETRIX	RETRACTION CORD
Ease of Application	✓✓✓	X
Patient Comfort	✓✓✓	X
Tissue Trauma	Minimal	High
Time Efficiency	Very high	Time taking
Gingival Recovery	Fast	Slow
Precision for Digital Impressions	✓✓✓	✓✓✓
Operator Skill Requirement	None	High

Certified to Serve with Confidence

Our commitment to compliance is constant. Every product you use is backed by dependable, regulated systems that support your clinical success.



Your Partner in Every Procedure

At **DENTESSA**, we believe great dentistry begins with dependable materials.

Every product in this catalogue reflects our commitment to *precision, quality,* and the clinical realities you face every day.

Thank you for choosing **DENTESSA** to be a part of your practice.

We promise to keep *innovating, improving,* and *supporting* you— One product at a time.



Visit our official
website



Watch product
tutorials




Share your
feedback with us



Access this
catalogue digitally

DENTESSA

...Elevating Dentistry

 Shivam Industries: 37A,
Industrial Estate, Digiana,
Jammu - 180010.

 Atyanta: Azad Timber Mart,
Singh Estate, Kandivali (E),
Mumbai - 400101.

 atyantadental  atyantadental  www.atyantadental.com   +91 9619633900